



FARM CREDIT

**ONE | MANY
MISSION | VOICES**

Farm Credit supports rural communities and agriculture with reliable, consistent credit and financial services, today and tomorrow.

SUPPORT

Make loans to more than 500,000 customers, including farmers, ranchers, farmer-owned co-ops and agribusiness in every state. Also finance exports of U.S. agriculture products.

RURAL COMMUNITIES

Support development of rural infrastructure, including water, broadband, telecommunications, electricity and transportation across the country.

AGRICULTURE

Serve approximately 40 percent of agriculture's credit needs, including for climate smart and regenerative ag practices.

RELIABLE AND CONSISTENT

Provide a steady source of capital needed to support customers through good times and bad.

CREDIT AND FINANCIAL SERVICES

Make loans for agriculture real estate and home mortgages, farm operating, equipment purchases, agribusiness operations, U.S. agricultural exports and infrastructure construction and operations. Provide financial services, including farm record-keeping, crop insurance, credit life insurance, tax-preparation and more.

TODAY AND TOMORROW

Lead the way in providing credit to young, beginning and small farmers and ranchers.

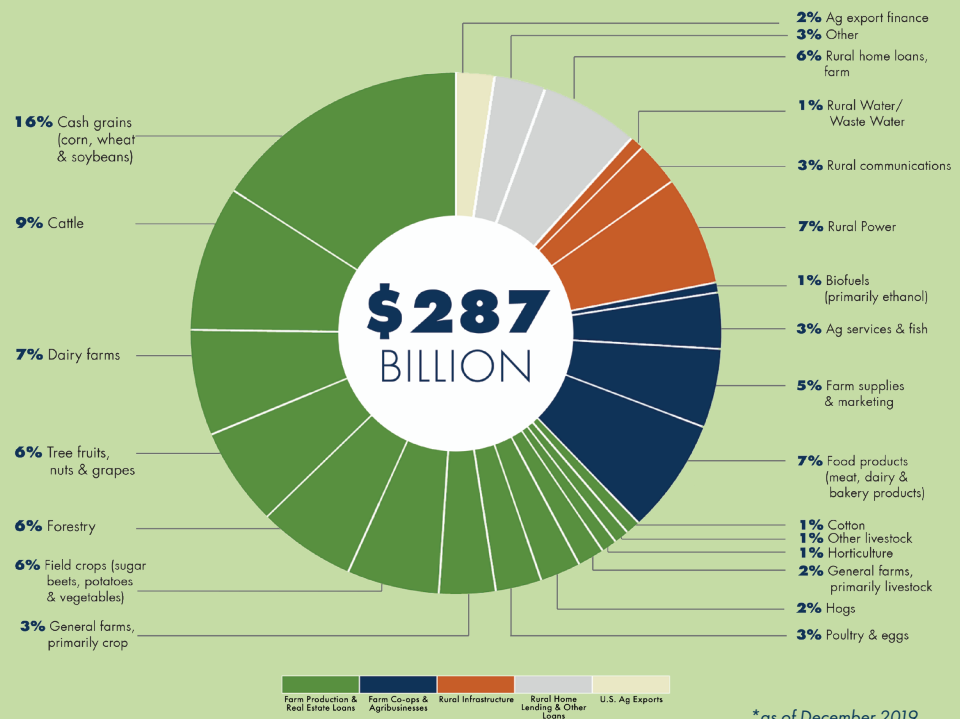
DEEP ROOTS IN RURAL AMERICA

Farm Credit is a nationwide network of customer-owned financial institutions that provides loans and related financial services to U.S. farmers and ranchers, farmer-owned cooperatives, rural homebuyers, agribusinesses and rural infrastructure providers.

As customer-owned cooperatives, Farm Credit institutions are governed by the customers they serve and have a specific mission to support rural communities and agriculture - in good times and bad. Farm Credit loans help U.S. agricultural producers feed the world, rural businesses grow and the rural economy thrive. Our infrastructure lending helps bring clean water to rural families, modern telecommunications to help rural businesses compete and reliable energy to rural communities.

Farm Credit's mission remains just as vital today as it was when we made our first loan more than 100 years ago. For more information about Farm Credit and how we support rural communities and agriculture, please visit www.farmcredit.com.

FARM CREDIT LOAN PORTFOLIO



*as of December 2019